

**TRACER STUDY REPORT ON
COLLEGE GRADUATES 2016**



Madan Bhandari Memorial College

New Baneshwor, Kathmandu

Submitted to
University Grants Commission
Sanothimi, Bhaktapur

December 2017

ACKNOWLEDGEMENT

This report was prepared as a tracer study of the graduates of Madan Bhandari Memorial College-academic session 2016. The graduates of MBMC from the faculties of Humanities and Social Sciences, Education, Management, and B.Sc. CSIT were the areas of study. It was prepared for the requirement of the HERP of UGC Nepal. The assistance from the UGC for carrying out of this study was invaluable. It would not have happened if the support from UGC and other helping hands was not incredible. The findings in the report could not have been obtained without the good responses from the key respondents of the study including the graduates of the MBMC, who were trained at the College and later employed in various sectors, some of which are self-employed and those who decided to continue with further studies at different College. Their participation in this study is highly valued and appreciated. Similarly, the report has been indebted to the tracer study team members for their tireless effort and for their dedication to make the study meaningful.

EXECUTIVE SUMMARY

Madan Bhandari Memorial College formed an executive team to conduct Tracer study. It was conducted in the month of March-June. It assessed the status of MBMC graduates for the graduates of 2016. It primarily focused on the employment, further study in Nepal and abroad study status of MBMC graduates based on competencies, skills and readiness of MBMC graduates to pursue further studies. The study included 52 students where the primary source of information from direct contact with the students was applied. Verbal consent of students was sought before the questionnaire administered to the students.

The findings indicate that MBMC graduates are well employed in the Nepalese markets specially Media sector, tourism sector and firm sector as well. Out of 52 respondents 27 are employed in different sectors and 22 respondents are pursuing further education in Nepal and 4 are studying further abroad in US and Australia. Among the respondents employed in different sectors are satisfied with their work and convinced to have quality education they have got in MBMC. 5 respondents had suggestion to the college to focus on practical education. Majorities of respondents had good response for the internship facility of college in different firm and media sector that have helped them to cope with the work they are doing.

TABLE OF CONTENTS

ACKNOWLEDGEMENT	ii
EXECUTIVE SUMMARY	iii
LIST OF TABLES/CHART	v
LIST OF FIGURES	vi
ABBREVIATIONS	vii
Background/Rationale:	1
1.2 Objectives of the study.....	1
1.3 Institutional arrangements to conduct the study.....	2
1.4 Graduate batch taken for the study	2
1.5 Data collection - Instruments and approach.....	2
1.6 Scope and limitations of the study	3
2. DATA PRESENTATION AND ANALYSIS:	3
2.1 NUMBER OF STUDENTS GRADUATED IN THE YEAR 2016 AD.....	3
2.2 Traced students present status and analysis	4
2.3 Post Graduates performance status	5
3. Issues related to facilities such as library, laboratory, canteen, sports facilities, urinals etc.....	6
3.1 Library.....	6
3.2 Laboratory:.....	6
3.3 Computer lab.....	6
3.4 Sports & ECA	6
4. IMPLICATIONS TO INSTITUTIONAL REFORM	7
5. CONCLUSION AND RECOMMENDATIONS:.....	7
5.1 Recommendations for the Study	7
APPENDICES	8

LIST OF TABLES/CHART

Chart 1: Status of the Graduates from different faculties

Chart 2: Number of the Post-Graduates in different faculties

LIST OF FIGURES

Chart 1: Number of students graduated in the year 2016

ABBREVIATIONS

MBMC –	Madan Bhandari Mmemorial College
MBM –	Madan Bandari Memorial
HERP -	Higher Education Reform Projects
QAA –	Quality Assurance Accreditation
LOI –	Letter of Intent
UGC –	University Grants Commission
ECA –	Extra Curricular Activity

Background/Rationale:

Madan Bhandari Memorial College, a not for profit academic institution was established in 2001 by Madan Bhandari Foundation to materialize the academic vision of the People's Leader Late Madan Kumar Bhandari. In contrast to numerous commercial colleges across the country, the college imparts quality education at an affordable fee structure and aims to transform itself into a center of academic excellence. The enrollment of students from almost all the districts of the country makes it a truly national college. It has been running Graduate and Master level programs in its own building at new Baneshwor. It has been selected for HERP and moving further for the QAA process and has already been selected for LOI. It has been working on other programs of UGC for the quality improvement and further enhancement of quality assurance. It is committed to impart quality education internalizing its academic as well as social responsibility.

1.2 Objectives of the study

Madan Bhandari Memorial College aims at achieving the following objectives through the Tracer Study:

- To assure the responsibility of college towards its graduates;
- To survey the status of its graduates after achieving the Degree from the college;
- To identify the quality life standards of its graduates;
- To check the contributions of its graduates towards the community and nation
- To study the quality status of its graduates in nation as well as in global community

1.3 Institutional arrangements to conduct the study

MBMC has been working on QAA of UGC and committed to maintain quality in education producing human resources who are competent in the HR market

Formation of committee: To carry out the Tracer study in MBMC the CMC has formed a committee to execute the activities in college.

Committee members: The Committee is consists of seven members: Mr. Hari Chand, Mrs. Niruja Phuyal, Mr. Shobakar Bhandari Mr. Arun Sharma, Ms. Pratikshya Kattel, Mr. Poshan Niraula, Mr. Santosh Thapa.

Work allotment: The work plan is allocated for Tracer Study under the leadership of Mr Shobakar Bhandari assisted with Mr. Poshan Niraula and Mr. Santosh Thapa. To make data available Mr. Poshan Niraula was assigned. Work was accomplished with the collaboration of the team.

Availability of required resources: The resources like data, RMC, and other requirements were made easily available.

Regular sharing session and cooperation: The team had regular sharing sessions. Any confusions and problems were solved through sharing and cooperation.

1.4 Graduate batch taken for the study

- The graduate batch taken for the study is batch 2016.

1.5 Data collection - Instruments and approach

- Primary and secondary sources of data collection have been used
- Students have personally filled up the questionnaire form developed by the research committee
- Secondary sources of student data from college administration and students employed and involved institution's information

1.6 Scope and limitations of the study

- An empirical study of MBMC's Graduates
- Formation of MBMC Alumni
- Study the impact of MBMC's education quality

The study is limited on the data available from the student's participation on trace study and their inputs;

- The data of college record;
- Documents made available by the participants

2. DATA PRESENTATION AND ANALYSIS:

MBMC graduated 80 students in the year 2016. The table below shows the statistical data of graduate and post graduate students from different streams or faculty

2.1 NUMBER OF STUDENTS GRADUATED IN THE YEAR 2016 AD

SN	Programs	Total Graduates	Female Graduates	Educationally Disadvantaged Graduates	
				Educationally Disadvantaged Janajatis	Dalits
Bachelors	BBS	19	10	3	-
	BA	35	20	3	1
	BEEd.	9	9	-	1
	BSc. CSIT	7	-	-	-
Bachelor Total		70	39	6	2
Masters	Sociology	4	3	-	-
	JMC	4	4	1	-
	English	2	2	-	-
Master Total		10	9	1	-
Grand Total		80	48	7	2

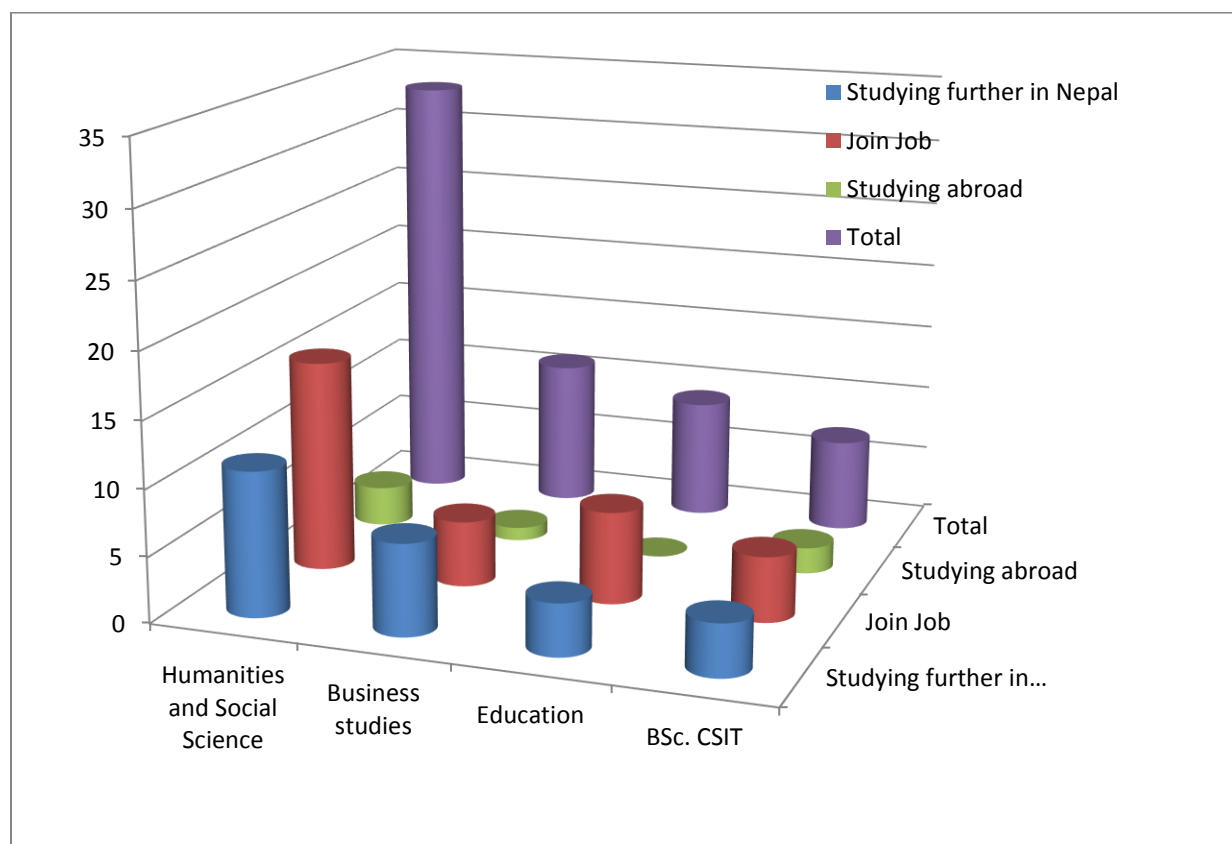
Table: Showing the Graduates and Post Graduates of MBMC in the Year 2016

The general trend of students studying higher education in this college shows that Bachelor of Humanities and social science has become the first choice of the students. Bachelor of Business studies has become the second choice of students. Bachelor of Education and BSc.CSIT are the next choices of the students. The Table above shows the data of MBMC graduates in the year 2016. 80 students have been graduated. The four faculties running at MBMC graduated the students as shown in the table.

2.2 Traced students present status and analysis

This study has used the data of graduates (Chart 1) and post graduates (Chart 2) of academic year 2016 AD. The following tables show the status of graduates and post graduates personnel of MBMC status at present. Graduates in different faculties in table 1 show their status after the college education:

Chart: 1 showing the status of the Graduates from different faculties

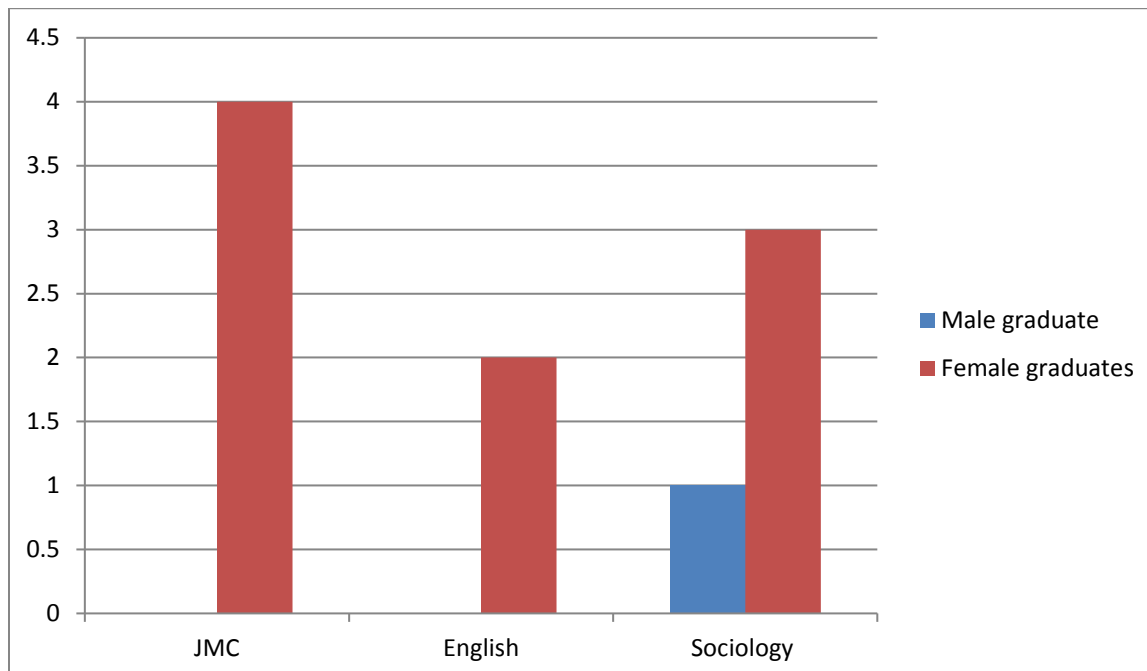


The general trend of graduates of MBMC shows that they are focusing in further study in Nepal in all the faculty rather than job seeking and abroad study. The employment trend of MBMC graduates is the second in statistical study. The table shows that 52 graduates were traced and participated in the research from the academic year 2016. Out of them 22 are studying further education in Nepal, 28 graduates have joined job and 4 graduates are studying further abroad. This trend of MBMC graduates indicates their performance of after being graduated.

2.3 Post Graduates students

The faculties running in Master level are Journalism, English and Sociology. The following graph shows the graduates in Master level in the year 2016.

Chart: 2 showing the number of the Post-Graduates in different faculties



3. Issues related to facilities such as library, laboratory, canteen, sports facilities, urinals etc.

3.1 Library

The library serves students and faculty as a primary source of information with its growing collection of the relevant books for students. The library also has other study materials; reference books, popular magazines and journals to facilitate the learning process. Moreover, we add a substantial number of books and study materials to the library.

3.2 Laboratory:

The College has got well equipped laboratory facility for Biology, Physics and Chemistry

3.3 Computer lab

The College provides computer lab facility to the students as part of their syllabus and to make them frequent users of computer.

3.4 Sports & ECA

MBMC runs various ECA programmes. At MBMC education does not stop when you leave the classroom. Various extra-curricular activities are conducted in the college premise on a regular basis. Field trips to different sites are organized to enhance the importance of practical learning. There are arrangements for group excursions, participation in exhibitions and other extra-curricular activities. Sports week is held every year to support overall development of students

4. IMPLICATIONS TO INSTITUTIONAL REFORM

MBM College has implemented institution reform program to bring various changes in necessary areas for the quality education producing competitive human resource to the market.

5. CONCLUSION AND RECOMMENDATIONS:

The respondents had various perceptions on their ability in working areas with the education that they have acquired at the college. The remarks were: to bring innovation in teaching learning activity, continuous assessment, practical education, market study for the production of graduates helping them to cope with the working environment, recruitment of quality human resource for better output of human resource. Among the respondents there were note of appreciations to the activities of college.

The statistics shows that 27 graduates were employed, 22 were studying further in Nepal and 4 were studying abroad. 72% were very happy with the employment they have joined and 28% were not satisfied as they had difficulties in handling the work they were doing

5.1 Recommendations for the Study

Tracer study is crucial for understanding the relevance and quality of College programmes. Accordingly, the interviewed graduates recommended the following:

- (i) Emphasize on training- the currently practical training offered are not enough to improve the knowledge and experience of the graduates to compete in the job market
- (ii) Implementation new competitive courses and program such as International Relation, financial service and entrepreneurship courses.
- (iii) Focus on the courses and training that are centered to self-employment since most graduates are un employed

- (iv) Regular curricular review for maintaining the quality and relevance of the courses
- (v) Establishment of training department and tailor made courses

APPENDICES

- Decision regarding Tracer Study Task Team formation
- Decision regarding Tracer Study Work Plan
- Graduate name list as per the annex 1.2 and /or 1.3 (graduate names in alphabetically sorted order and grouped by programs)